

GERALDTON (GREENSTONE REGIONAL) ON

CYGO

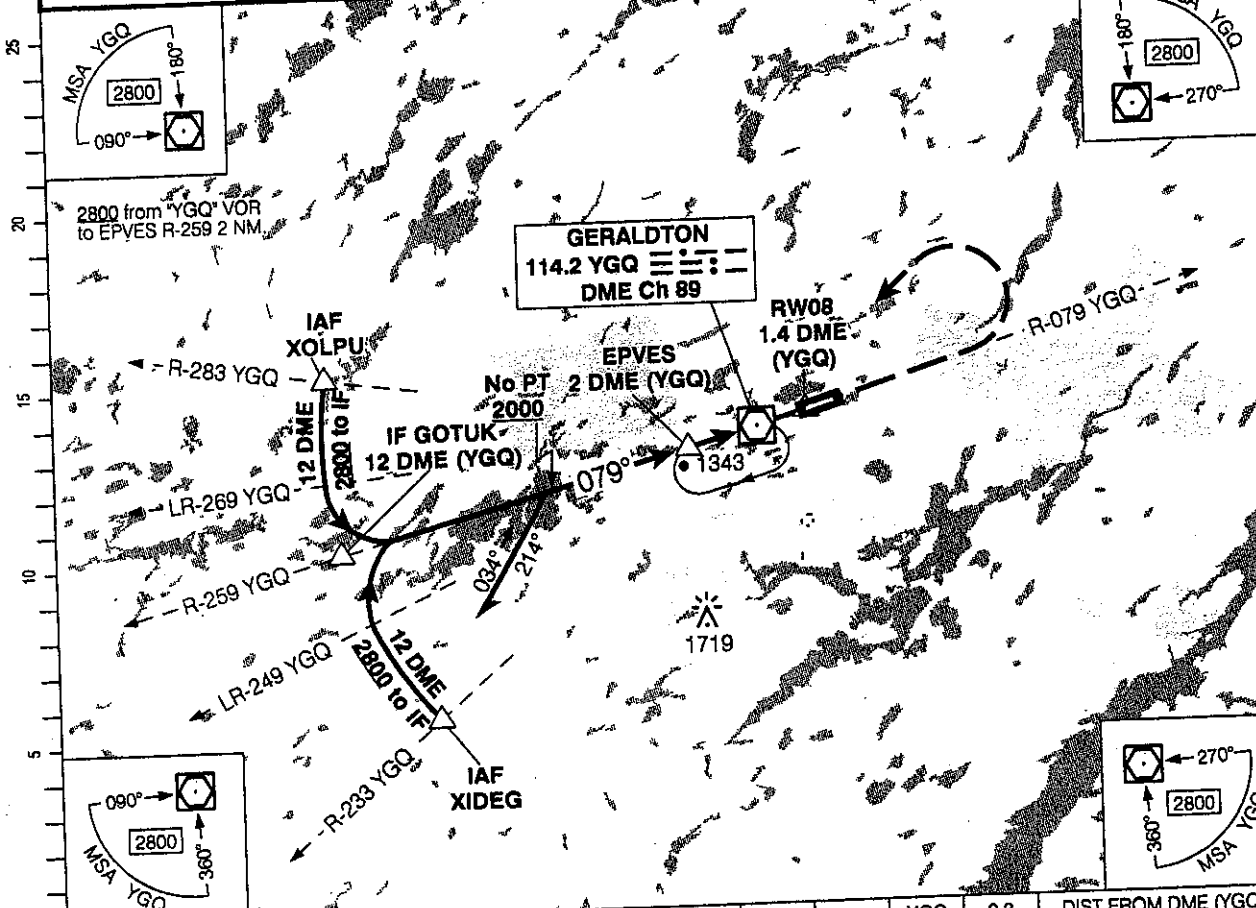
REF.	N49 46 43 W86 56 19 3N 6°W UTC-5(4) Elev 1143' A5008 LO4 HI4 CAP	
OPR	Town 807-854-1694 after hrs 807-854-6727 Cert	
PF	A-1 B-6 C-2,3,4,5	
FLT PLN	NOTAM FILE CYGO FIC London 866-WXBRIEF (Toll free within Canada) or 866-541-4104 (Toll free within Canada & USA) WX METAR H24. TAF H24, issue times: 02, 08, 14, 20Z.	
SERVICES	13-23Z± exc Jan 1 & Dec 25 O/T 1 hr PN. Call out chg after hrs.	
FUEL	100LL, JA-1, FSII 13-23Z± dly ctc 807-854-1694 O/T ctc 807-854-6727/1841	
OIL	All	
S	4,5,6	
RWY DATA	Rwy 08(079°)/26(259°) 5007x100 asphalt	
APRON	Apron II pvt PN 807-854-1600	
RCR	Opr 13-23Z± exc Jan 01 and Dec 25 O/T PN Call out chg after hrs CRFI	
LIGHTING	08-AS(TE ME) P2, 26-AS(TE ME) P2 ARCAL-122.8 type K	
COMM	RCO London rdo 123.475 (FISE) 126.7 (bcst) ATF UNICOM Ltd hrs O/T tfc 122.8 5NM 4100 ASL	
NAV	VOR/DME YGQ 114.2 Ch 89 N49 46 11 W86 59 04 (1205')	
CAUTION	Adj water A/D	

111
CYGQ-IAP-5A

GERALDTON (GREENSTONE REGIONAL), ON
494643N 0865619W VAR 5°W
CYGQ

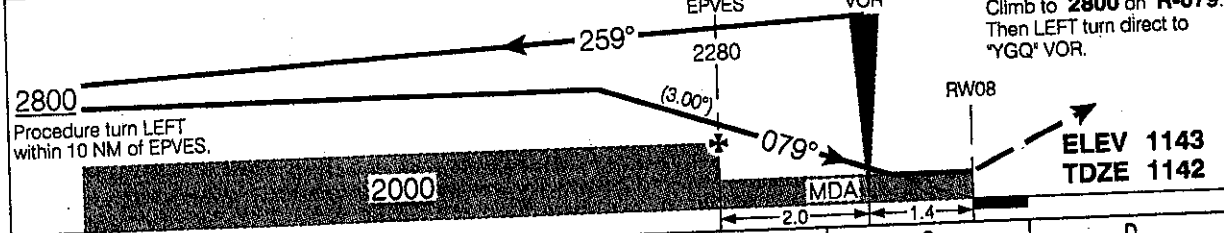
VOR/DME RWY 08 (GNSS)

RADIO London - 123.47		UNICOM - 122.8 (AU)		ATF		ARCAL 122.8(K)	
SAFE ALT 100 NM 3400	VOR YGQ 114.2	APCH CRS 079°	MIN ALT EPVES 2000	LDA 5007			



Source of Canadian Civil Aeronautical Data: © 2015 NAV CANADA. All rights reserved

(NM)	12	10	9	8	7	6	5	3.6	3	2	1	YGQ	0.3	DIST FROM DME (YGQ)
	5470	4830	4520	4200	3880	3560	3240	2800	2610	2290	1970	1650	1560	ALT (3.00° APCH PATH)



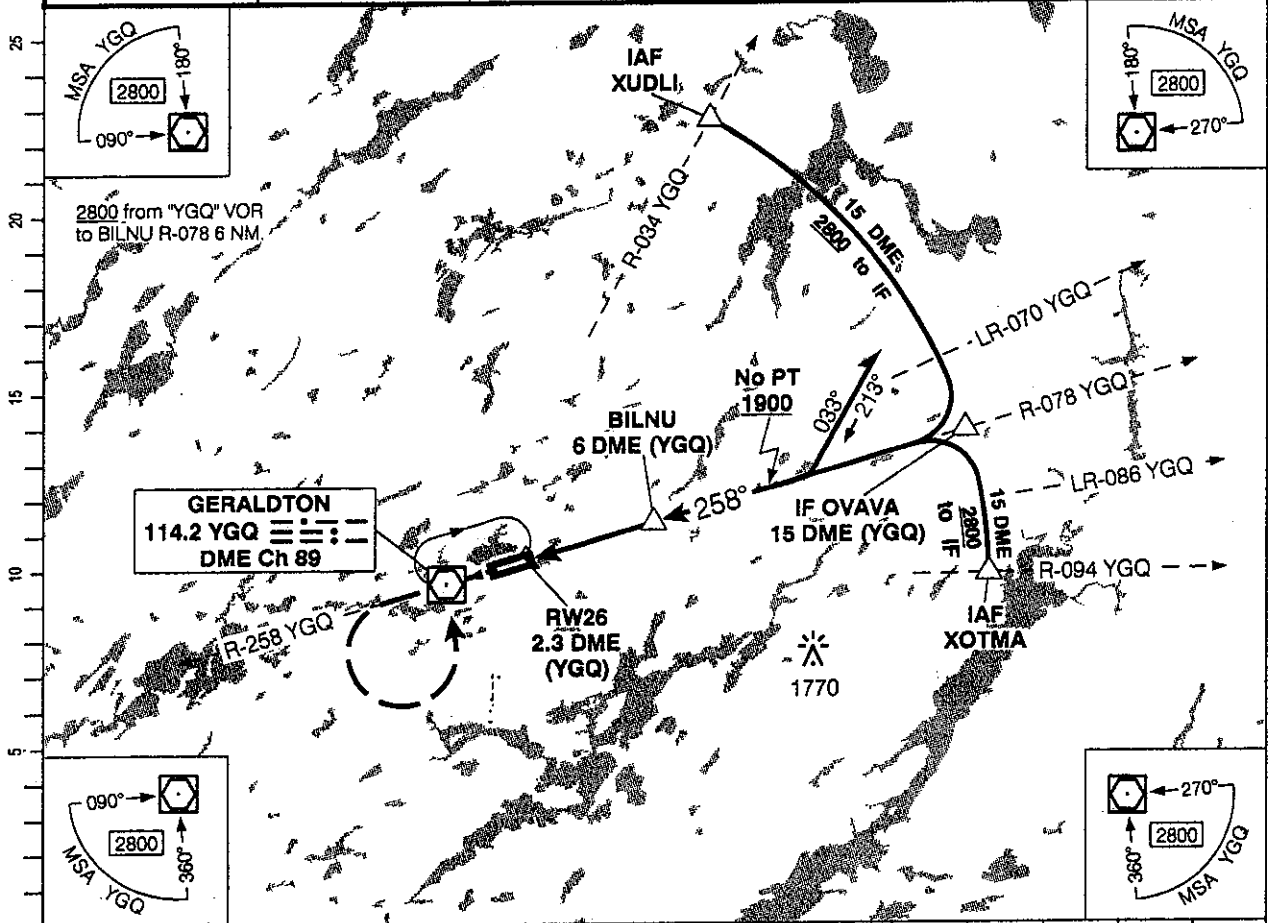
		CATEGORY	A		B		C		D		
		VOR/DME	1560		(418)		1%				
		CIRCLING	1660	(517)	1%	1660	(517)	2	1900	(757) 2%	
Knots	ft/min	Min:Sec									
70	370										
90	480										
110	580										
130	690										
150	800										

VOR/DME RWY 08 (GNSS)

CYGQ

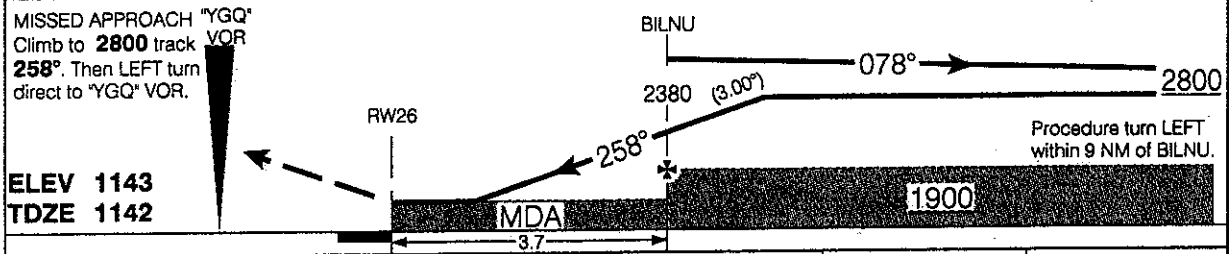
VOR/DME RWY 26 (GNSS)

RADIO London - 123.47		UNICOM - 122.8 (AU)			ARCAL 122.8(K)
SAFE ALT 100 NM 3400		VOR YGQ 114.2	APCH CRS 258°	MIN ALT BILNU 1900	LDA 5007



Source of Canadian Civil Aeronautical Data: © 2015 NAV CANADA All rights reserved

DIST FROM DME (YGQ)	3.4	4	5	6	7.3	8	9	10	11	12	13	14	15
ALT (3.00° APCH PATH)	1560	1740	2060	2380	2800	3010	3330	3650	3970	4290	4600	4920	5240



CATEGORY		A	B	C	D
VOR/DME		1560	(418)	1 1/4	
Knots	ft/min	Min.Sec	CIRCLING		
70	370		1660	(517)	1 1/2
90	480		1660	(517)	2
110	580		1900	(757)	2 1/4
130	690				
150	800				

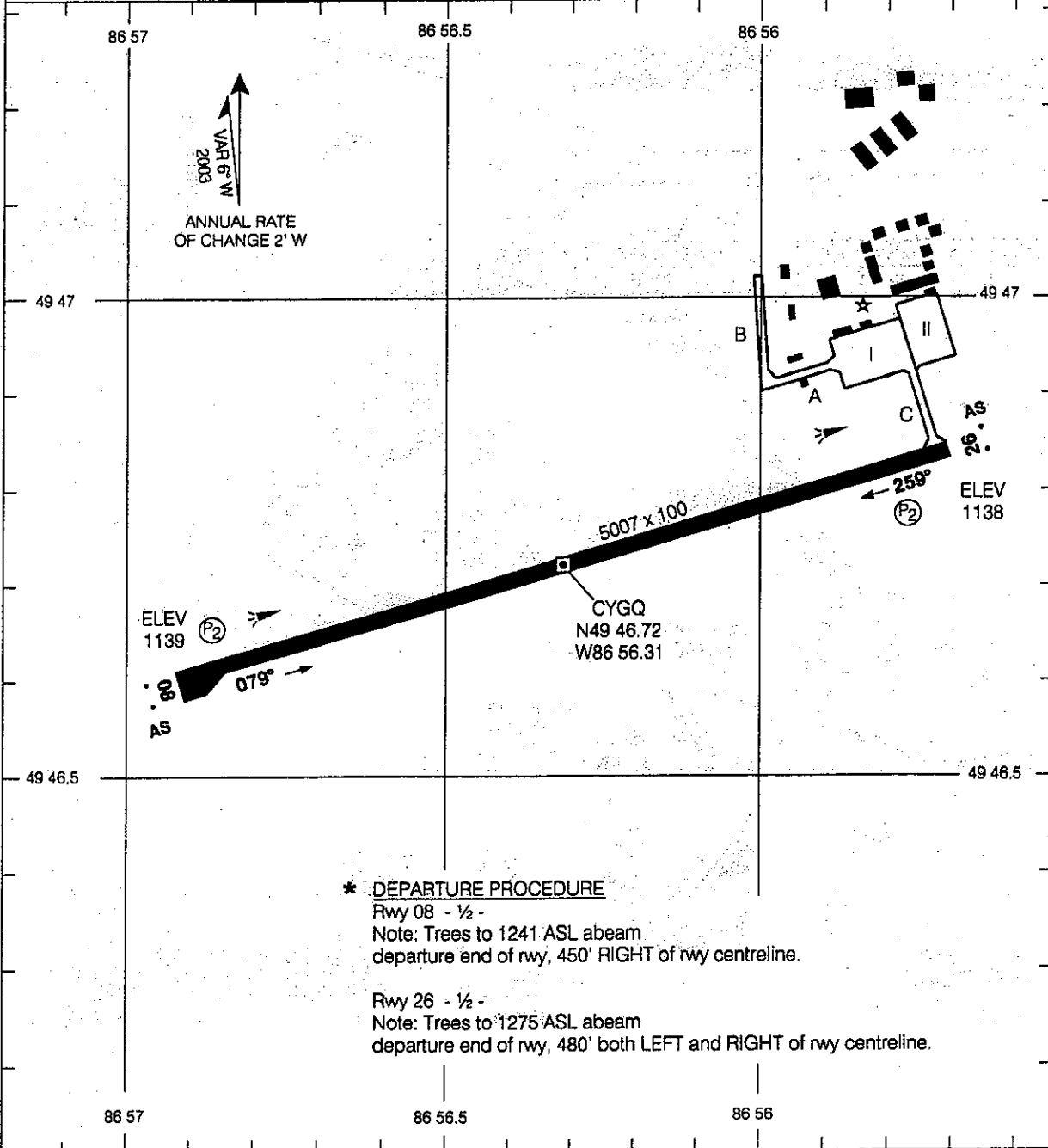
VOR/DME RWY 26 (GNSS)
EFF 20 AUG 15

CYGQ



AERODROME CHART

		UNICOM - 122.8		RADIO London - 123.47	
		ATIS			
DECL DISTS	08	26			
TORA	5007	5007			
TODA	5207	5207			
ASDA	5007	5007			
LDA	5007	5007			



Source of Canadian Civil Aeronautical Data: © 2015 NAV CANADA All rights reserved

*** DEPARTURE PROCEDURE**
 Rwy 08 - ½ -
 Note: Trees to 1241' ASL abeam departure end of rwy, 450' RIGHT of rwy centreline.
 Rwy 26 - ½ -
 Note: Trees to 1275' ASL abeam departure end of rwy, 480' both LEFT and RIGHT of rwy centreline.

TAKE-OFF MINIMA	SCALE IN FEET
Rwys 08, 26: *	1000 0 1000

AERODROME CHART

