

NAKINA ON

CYQN

REF	N50 10 59 W86 41 51 Adj 6°W UTC-5(4) Elev 1061' A5008 LO4 HI4 CAP	
OPR	Nakina Air Service and Outpost Camps 807-329-5752 Cert Ldg fees	
PF	A-1 C-2,4,5 D-3	
FLT PLN FIC	NOTAM FILE CYGQ London 866-WXBRIEF (Toll free within Canada) or 866-541-4104 (Toll free within Canada & USA)	
SERVICES FUEL S	12-22Z‡ Mon-Sat exc Jan 01 & Dec 25 1 hr PN Call out chg after hrs. 100LL, JA-1, FSII 12-22Z‡ Mon-Sat 807-329-5919 O/T 807-329-9606/5752 4,6	
RWY DATA APRON RCR	Rwy 09(090°)/27(270°) 3500x100 asphalt Apron II Pvt PN 807-329-5752 Opr 12-22Z‡ Mon-Sat exc Jan 1 and Dec 25 O/T PN Call out chg after hrs CRFI	
LIGHTING	09-(TE LO) AP, 27-(TE LO) AP ARCAL-122.8 type J	
COMM ATF	UNICOM ltd hrs.O/T tfc 122.8 5NM 4100 ASL	
NAV NDB	QN 233 (M) N50 10 45 W86 37 53	
PRO	Consistent with safety, no turns to be made over the built up area of town.	



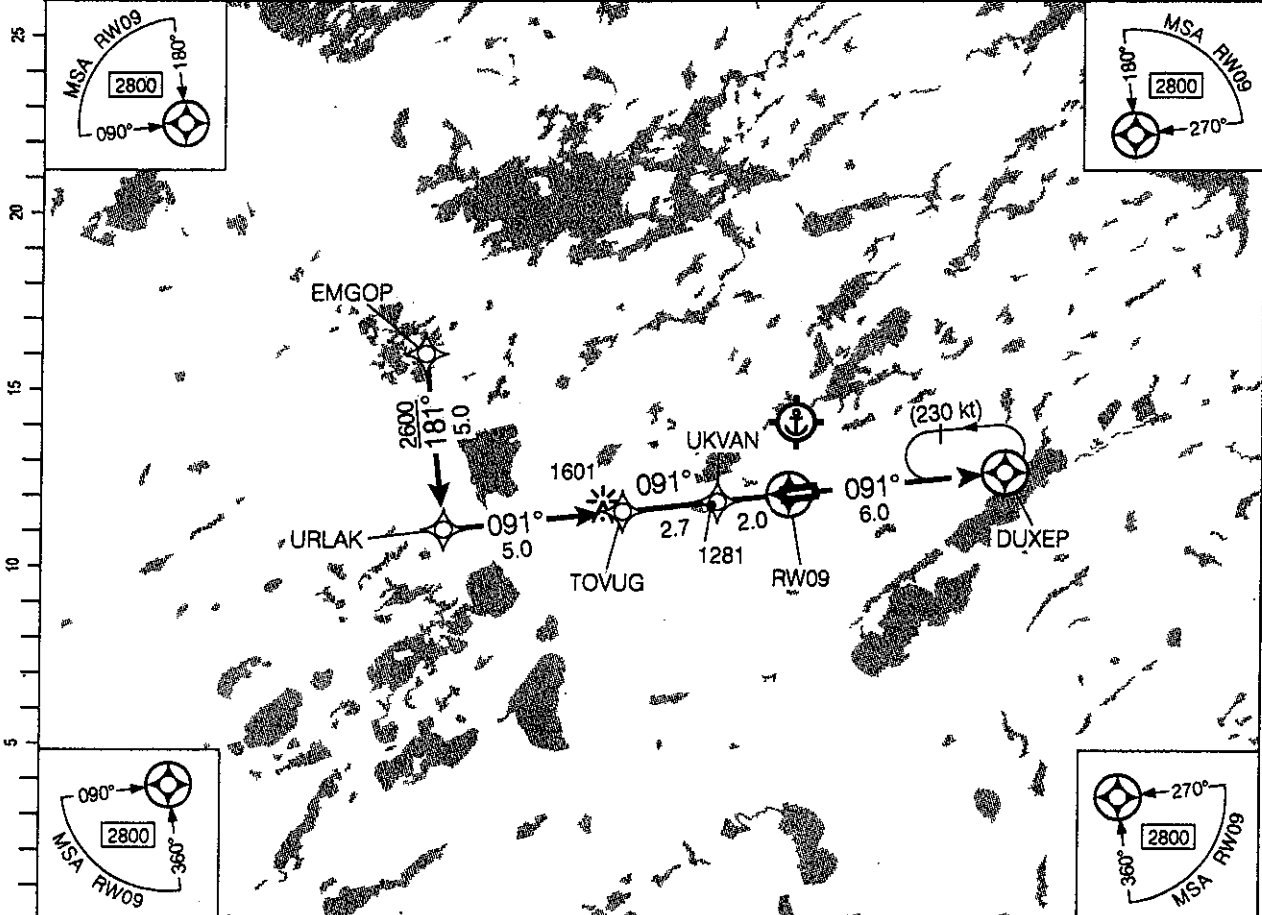
251
CYQN-IAP-3A

NAKINA, ON
CYQN

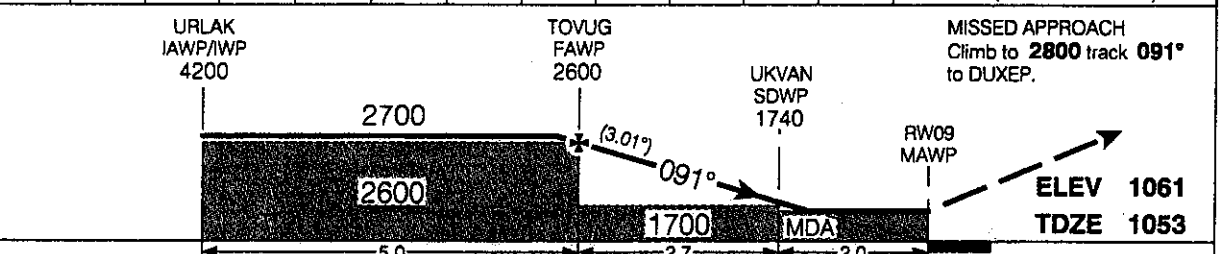
RNAV (GNSS) RWY 09

501059N 0864151W VAR 7°W

RADIO London - 123.47		UNICOM - 122.8		ARCAL 122.8(J)	
SAFE ALT 100 NM 3100		RNAV	APCH CRS 091°	MIN ALT TOVUG 2600	LDA 3500



	9.7	9	8	7	6	5.0	4	3	1.6		DIST FROM RW09
	4200	3980	3660	3340	3020	2700	2380	2060	1600		ALT (3.01° APCH PATH)



RASS: Use CYGQ.		CATEGORY	A	B	C	D
		LNAV	1600 (547)		1%	
Knots	R/min	Min:Sec	CIRCLING	1660 (599)	1%	1660 (599) 2 1680 (619) 2
70	370					
90	480					
110	590					
130	690					
150	800					

RNAV (GNSS) RWY 09

CYQN

EFF 24 JUL 14

CYQN-IAP-3A

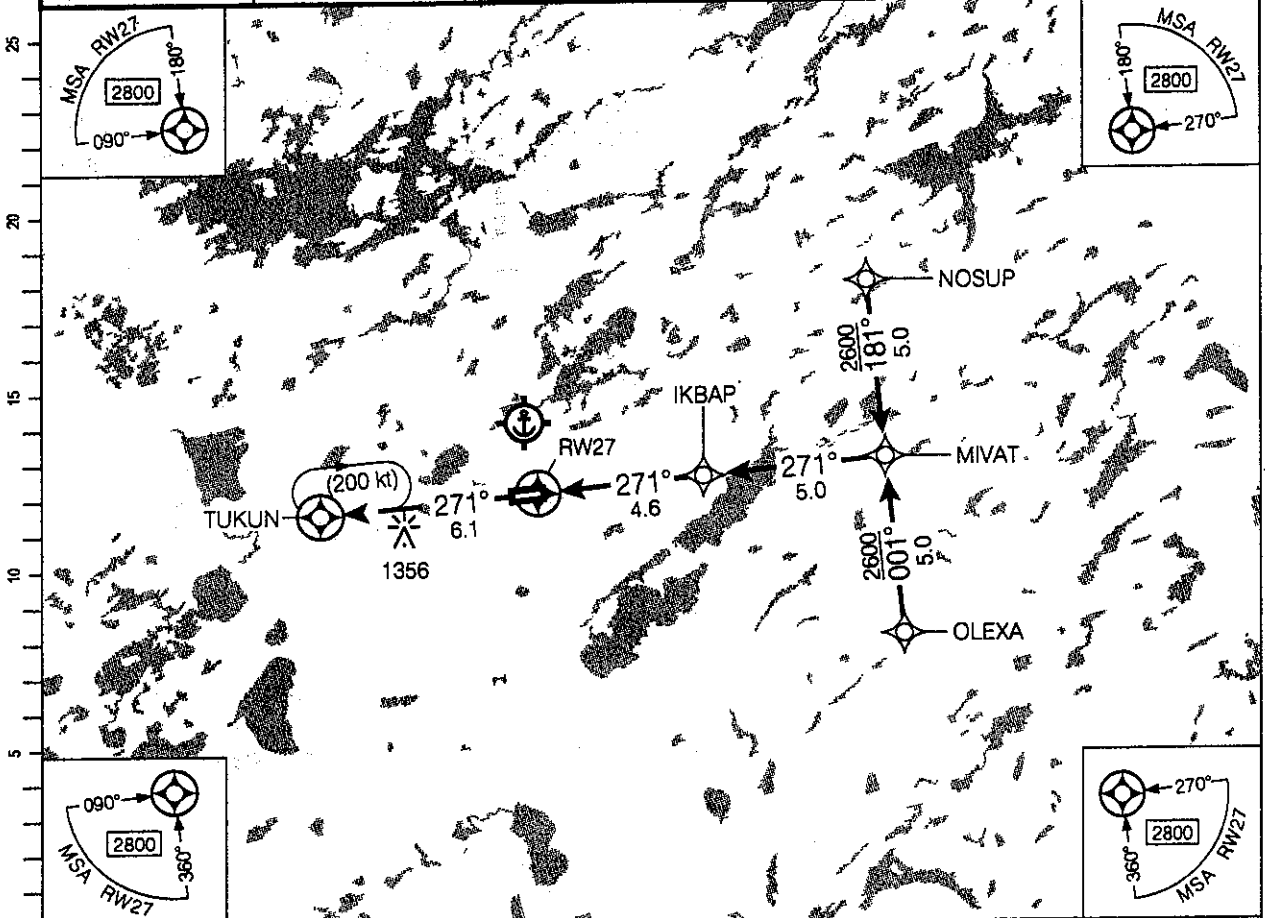
Source of Canadian Civil Aeronautical Data: © 2015 NAV CANADA All rights reserved

RNAV (GNSS) RWY 27

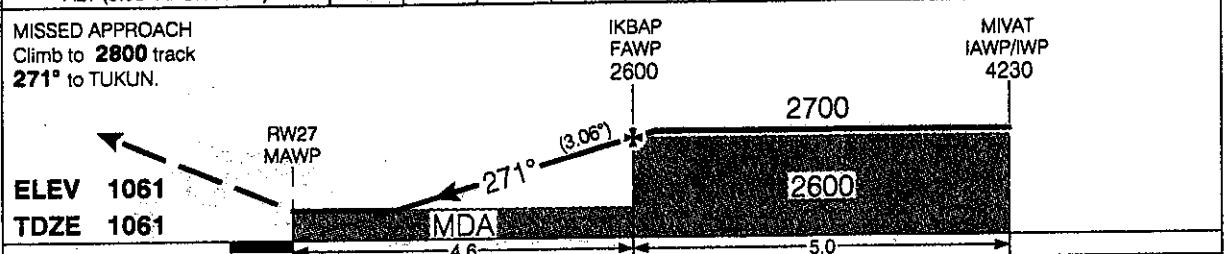
501059N 0864151W VAR 7°W

NAKINA ON
CYQN

RADIO London - 123.47		UNICOM - 122.8		ARCAL 122.8(J)	
SAFE ALT 100 NM 3100		RNAV	APCH CRS 271°	MIN ALT IKBAP 2600	LDA 3500



DIST FROM RWY27	1.4	2	3	4	4.9	6	7	8	9	9.6
ALT (3.06° APCH PATH)	1580	1760	2080	2410	2700	3060	3380	3710	4030	4230



RASS: Use CYGQ.			CATEGORY	A	B	C	D
LNAV			1580	(519)	1½		
CIRCLING			1660	(599)	1¼	1660 (599)	2 1680 (619) 2
Knots	ft/min	Min:Sec					
70	380						
90	490						
110	600						
130	700						
150	810						

RNAV (GNSS) RWY 27

EFF 24 JUL 14

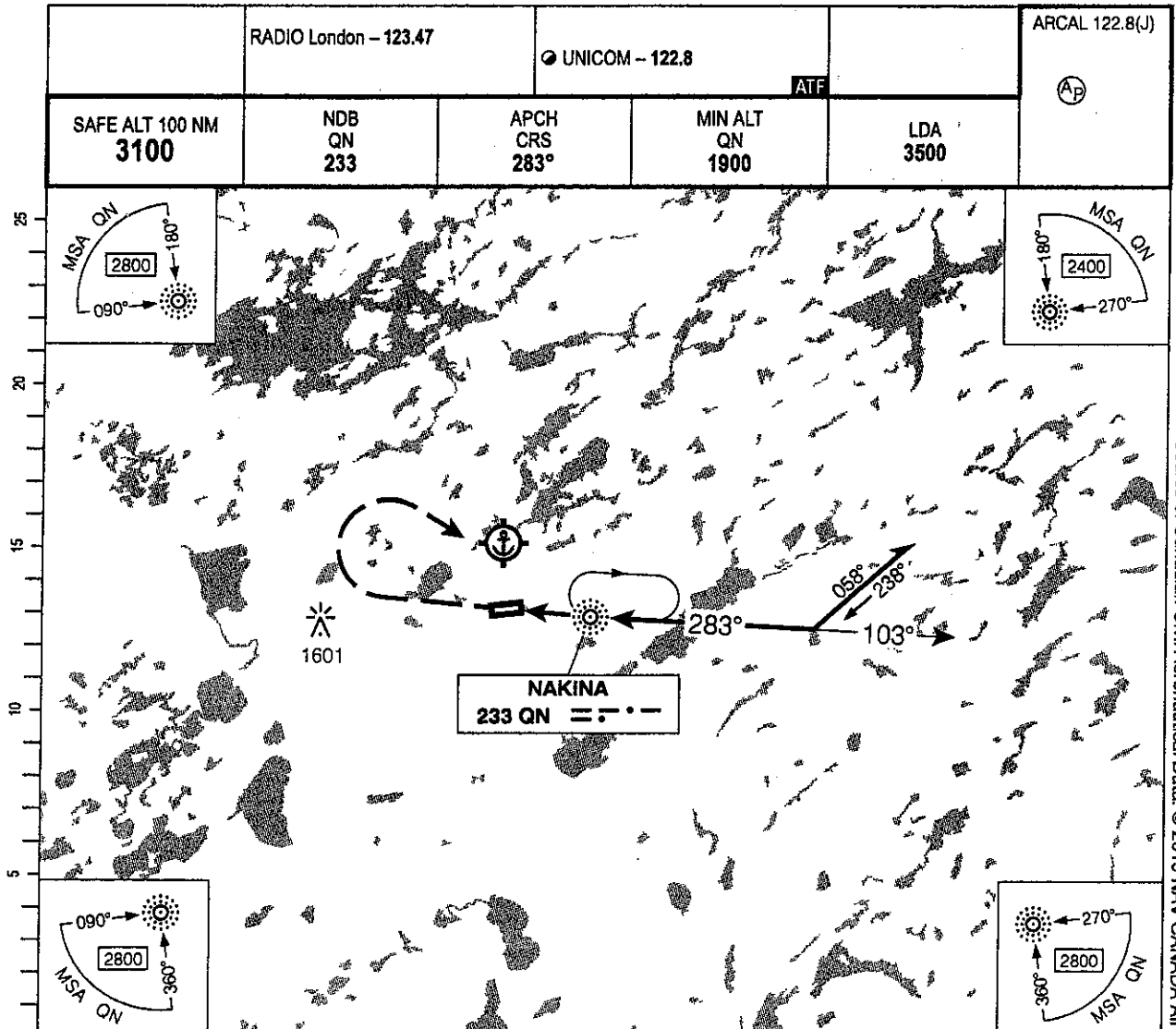
CYQN

CYQN-IAP-3B

Source of Canadian Civil Aeronautical Data: © 2015 NAV CANADA All rights reserved

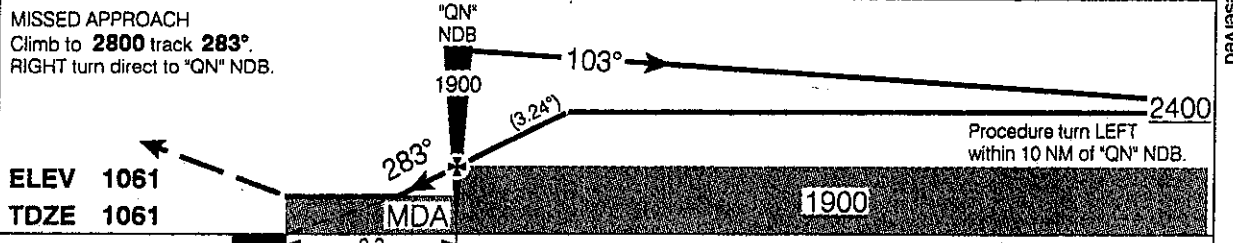
NDB RWY 27

501059N 0864151W VAR 7°W



DIST FROM MAP	1.5	2	3	3.8	5	6	7	8	9	10	11	12.3
ALT (3.24° APCH PATH)	1620	1800	2140	2400	2830	3170	3520	3860	4210	4550	4890	5340

MISSED APPROACH
Climb to **2800** track **283°**.
RIGHT turn direct to "QN" NDB.



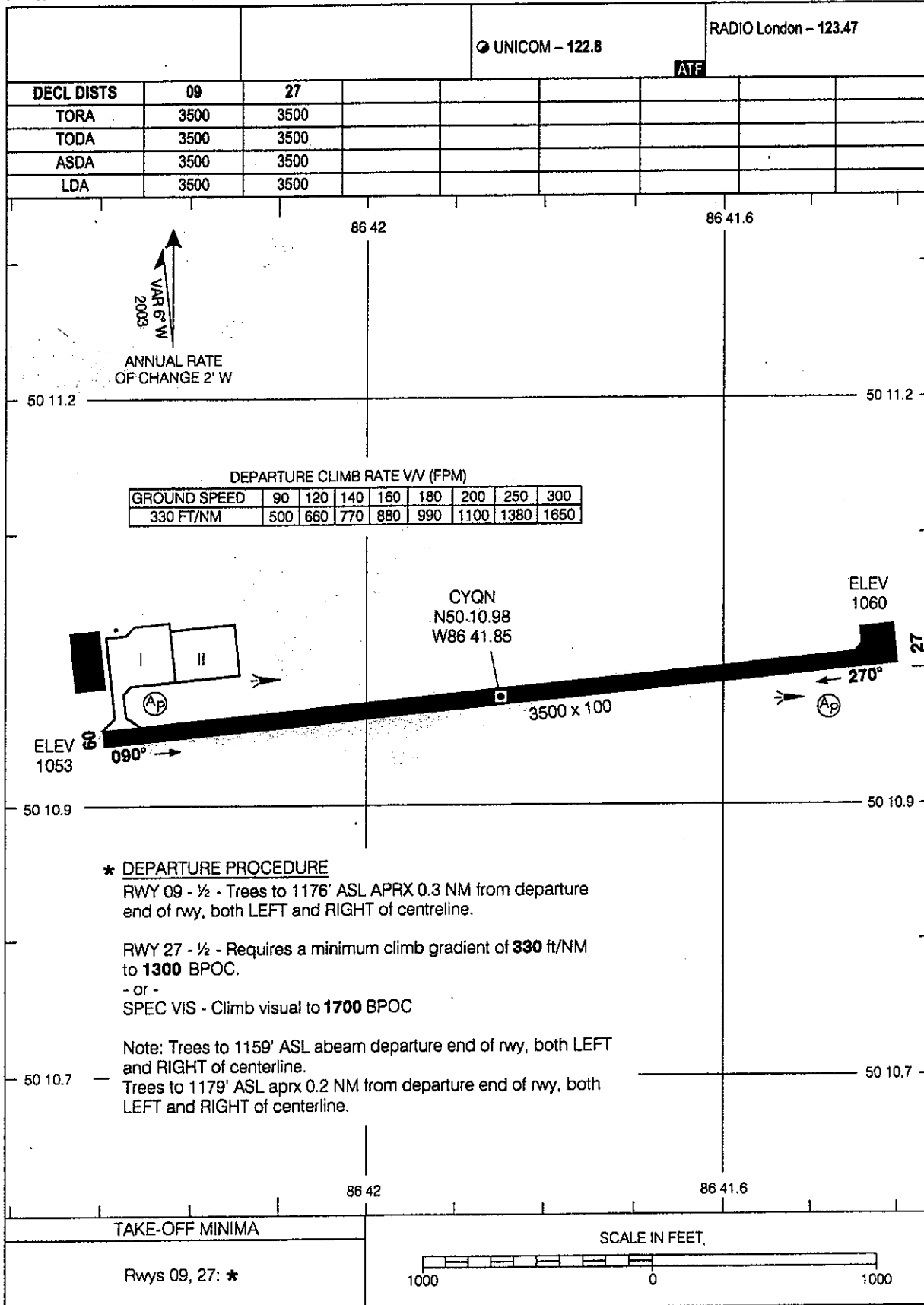
RASS: Use CYGQ.			CATEGORY	A	B	C	D
			NDB	1620	(559)	1%	
"QN" NDB to MAP 2.3 NM			CIRCLING	1660 (599)	1%	1660 (599) 2	1680 (619) 2
Knots	ft/min	Min:Sec					
70	400	1:58					
90	520	1:32					
110	630	1:15					
130	750	1:04					
150	860	0:55					

NDB RWY 27

CYQN

Source of Canadian Civil Aeronautical Data: © 2015 NAV CANADA All rights reserved

AERODROME CHART

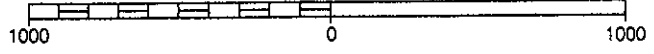


Source of Canadian Civil Aeronautical Data: © 2015 NAV CANADA All rights reserved

TAKE-OFF MINIMA

Rwys 09, 27: *

SCALE IN FEET



AERODROME CHART

EFF 24 JUL 14

CYQN

CYQN-AD

254

